

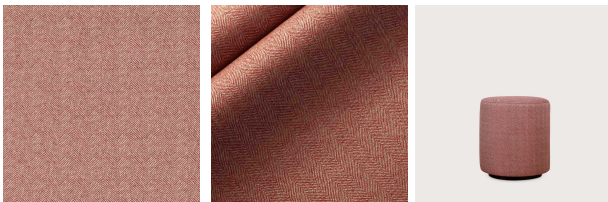
Brewer Herringbone - Ruby

£125 per metre

Playful and chic, our Brewer Herringbone is a light fabric with an intricate pattern and a touch of shimmer.

Specifications

Composition	52% Viscose 42% Linen 6% Polyester
Print Width	54"/137cm
Repeat	Horizontal: 3.5cm Chevron
Martindale	40,000 - Commercial Grade
Fire certificates	Cigarette only



Due to variations in computer screens, we cannot guarantee that the colours shown here are truly representative of our products. Prior to purchasing we recommend that you order a sample.

